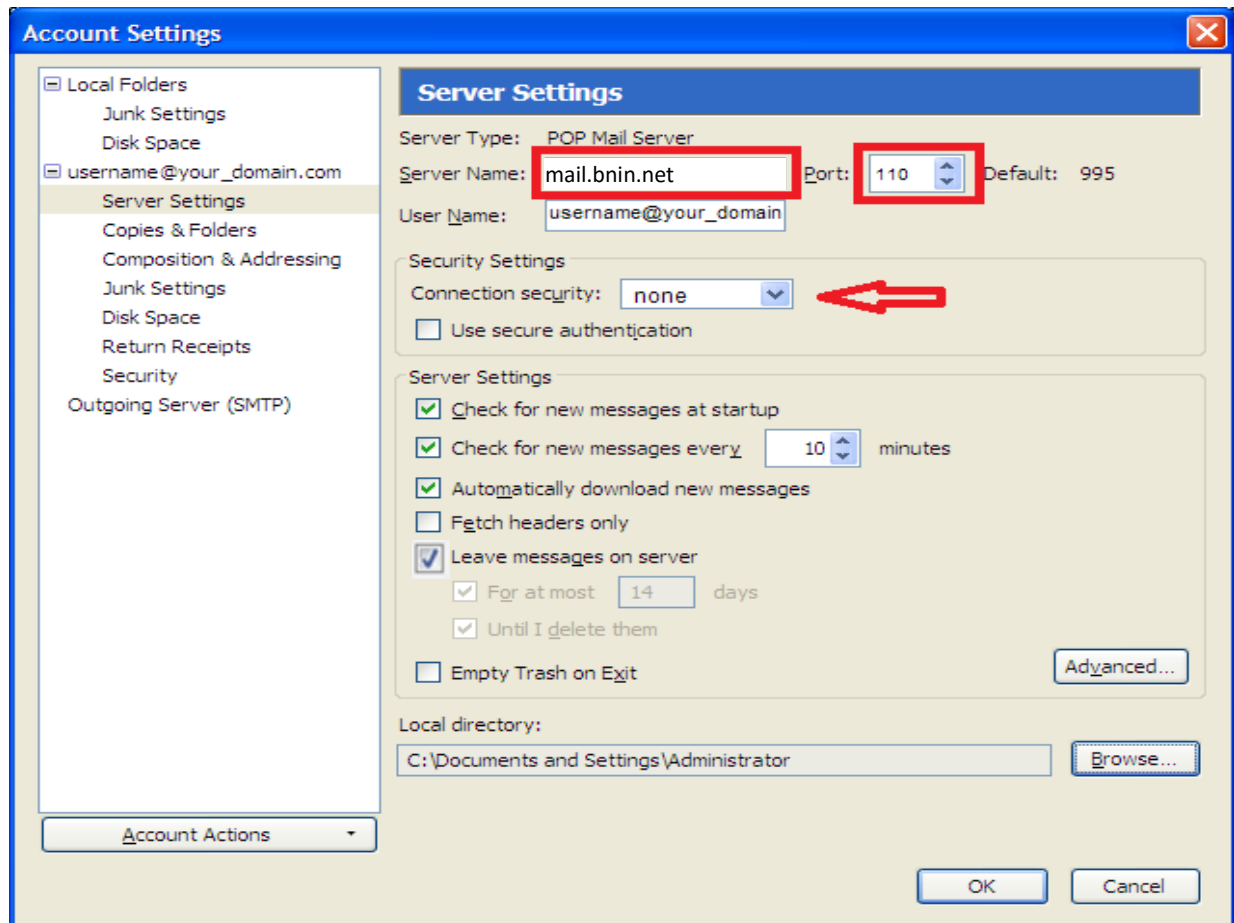


Thunderbird 3 Change settings for POP account

Open Thunderbird.

Click the **Tools** menu, and select **Account Settings...**

Click **Server** setting in the left-hand pane.



In the **Server Name** field enter **mail.bnin.net**

In the **Port** field enter **110**.

Click **Outgoing Server (SMTP)** in the left-hand pane.

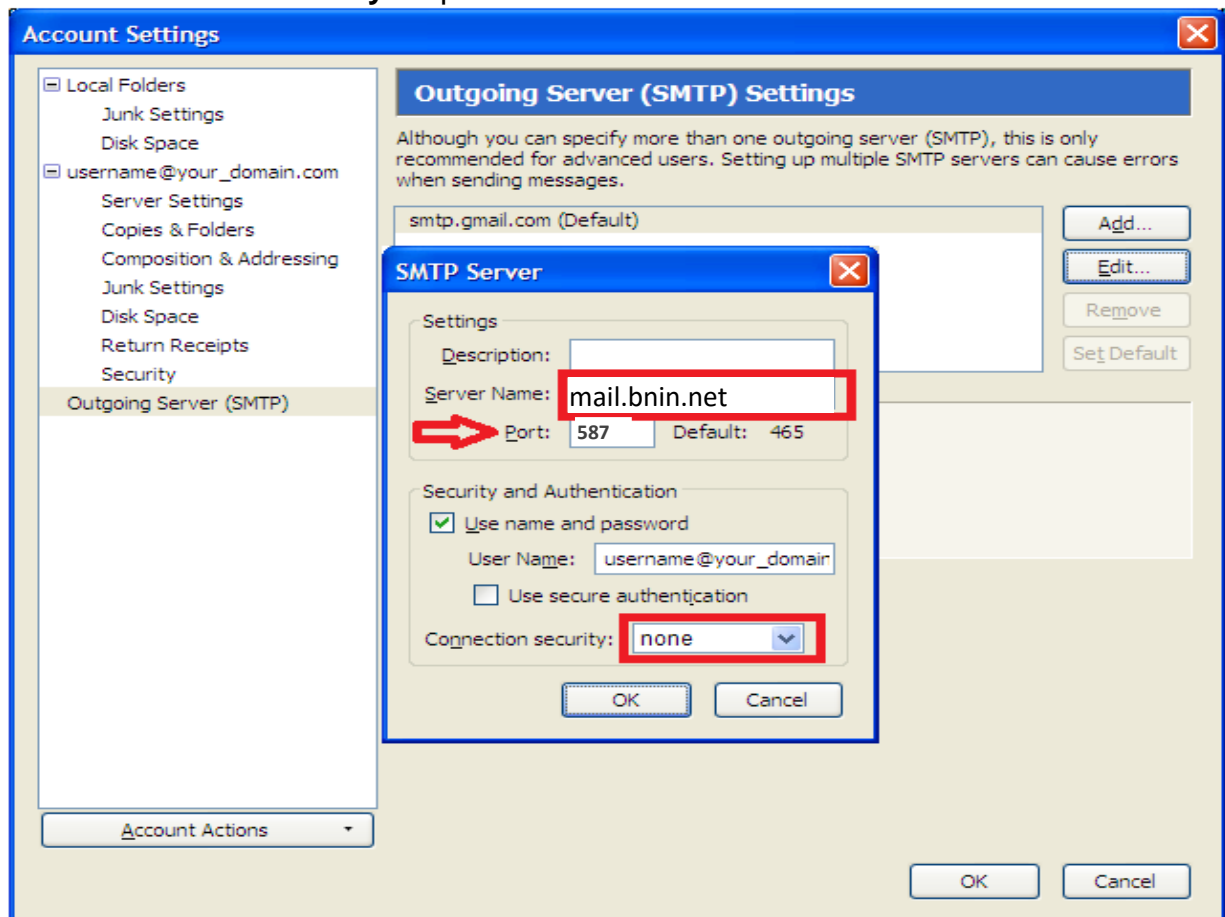
Select your account and click **Edit...**

Enter **mail.bnin.net** in the **Server Name** field.

Enter **587** in the **Port** field.

Under **Security and Authentication** put a check mark in **Username and password**.

Click the **Connection security** dropdown and select **none**.



Click **OK** on the SMTP Server box.
Click **OK** on the Account Settings box.

IMAP Accounts

Follow the same instructions using the following ports:

Incoming: 143

Outgoing: 587