

# Apple Mail for POP account

## Setting Your Outgoing (SMTP) Server Settings

Open Apple Mail.

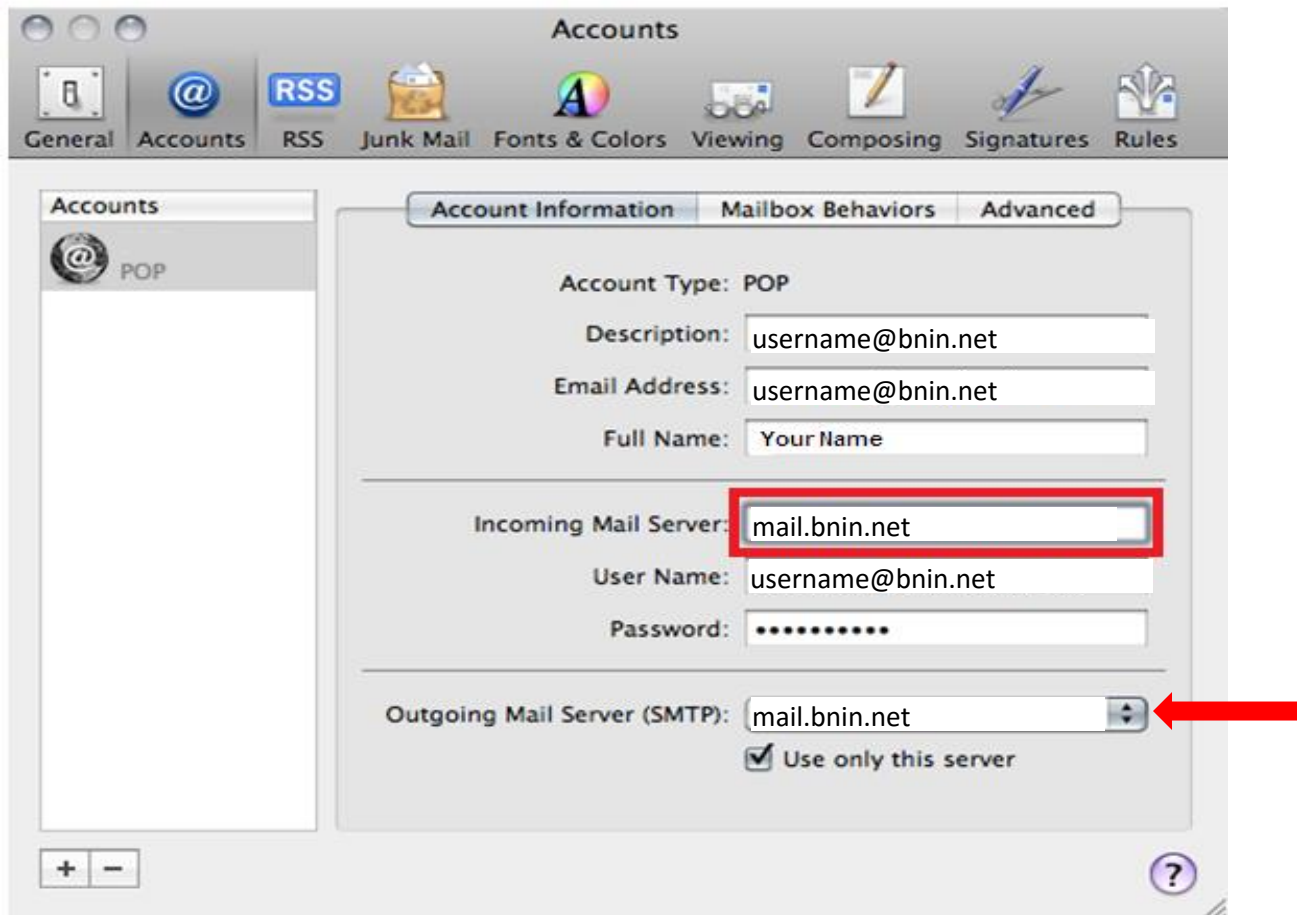
Click **Mail**, and select **Preferences...**

Open the **Accounts** tab and select your existing account in the left panel.

**Incoming Mail Server** should be set to mail.bnin.net. Your User Name and Password should remain the same

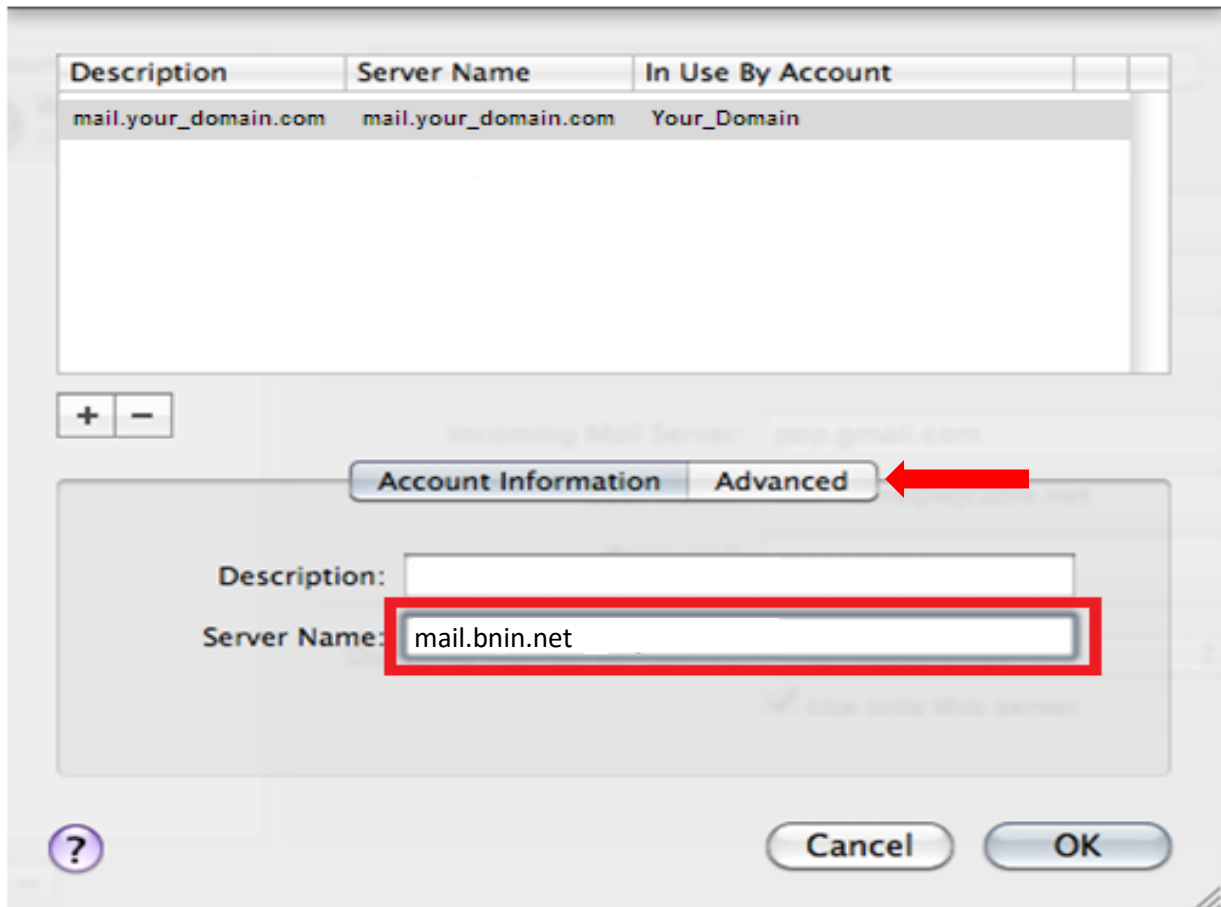
## Setting up your outbound SMTP server.

At the bottom of the right panel click the arrow to the right of **Outgoing Mail Server (SMTP)** and click “**Edit SMTP Server List ...**” from the dropdown.



You will be presented with the screen below.

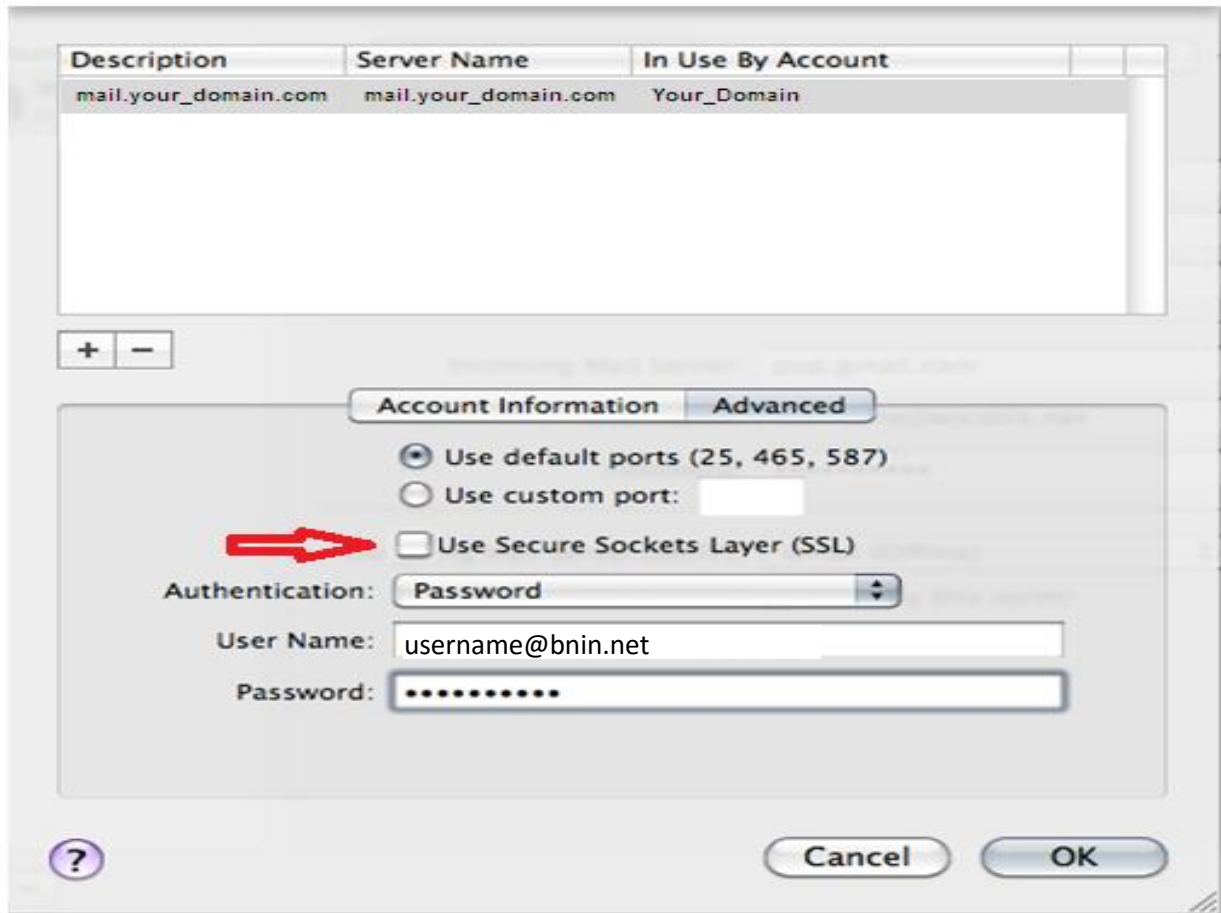
Enter the server name: mail.bnin.net



Click the **Advanced** tab and verify **Use default port (25, 465, 587)** is selected.

**UNCHECK** the box next to **Use Secure Sockets Layer (SSL)**.

Click **OK**



### Setting Your Incoming (POP) Server Settings

At the Accounts screen click the Advanced tab.

Set the Port field to 110 and make unchecked the box labeled Use SSL.

Make sure Authentication is set to Password and the close button and confirm that you wish to save.

